

ROMMANS



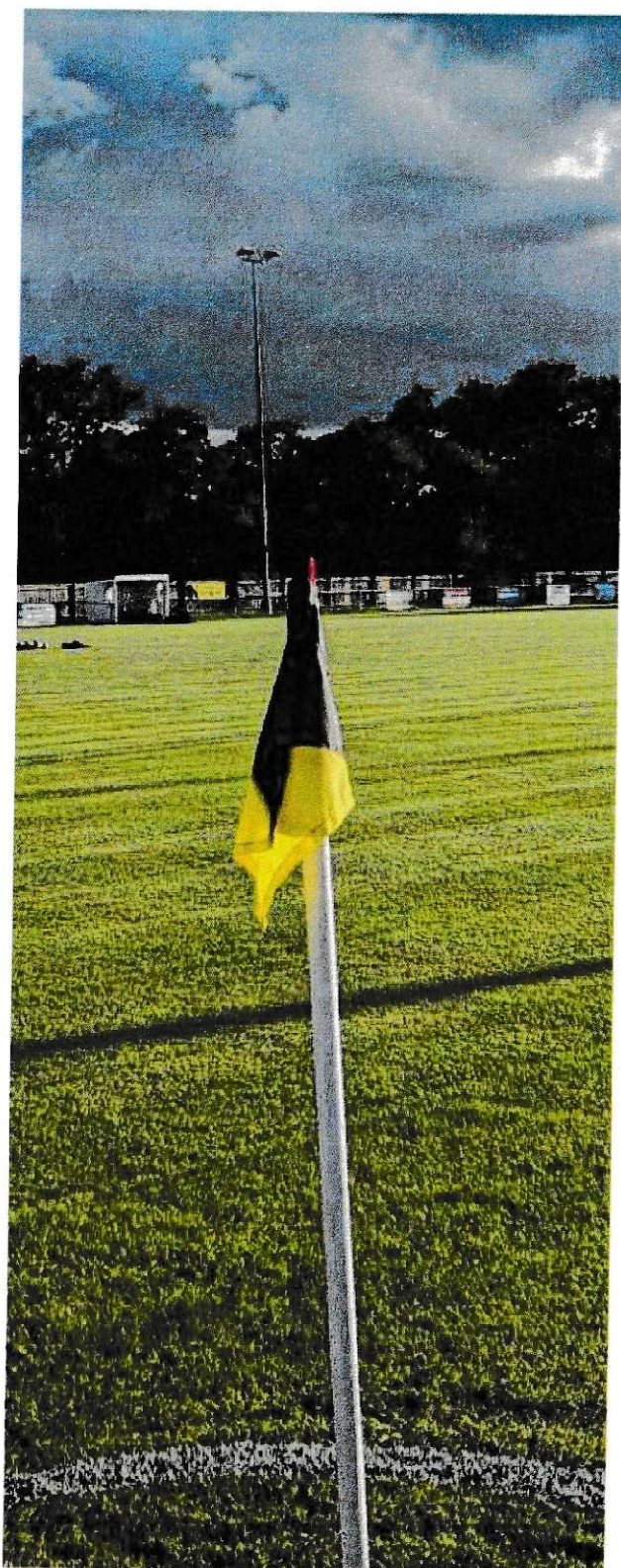
Combined Counties Premier South
Saturday 4th October | 15:00 k.o.
Official Matchday Programme £1





TADLEY CALLEVA FOOTBALL CLUB

Members of the Combined Counties Football League

**CHAIRMAN**

Sandy Russell

VICE CHAIRMAN

Danny Dolan

CLUB SECRETARY

Wayne Chivers

TREASURER

Pete Courtnage

FIRST TEAM MANAGER

Joe Lawler

FIRST TEAM ASSISTANT MANAGER

George Coffin

FIRST TEAM COACH

Aaron Parfitt

RESERVE TEAM MANAGER

Charlie Cunningham

COMMITTEE MEMBERS

Murray Knox
Dave Martin
Darren Gundry
Stephen Herbert
James Black
Rob Courtnage
Daniel Walkley
Luke MacClean

*Barlows Park, Silchester Rd,
Tadley RG26 3PX*

*Contact us via
www.tadleycalleva.com*

*Follow us on X @tadleycallevafc
Follow us on Instagram @tadley_callevafc
Follow us on TikTok @tadleycallevafc*







Tadley Calleva Football Club are a football club based in Tadley, Hampshire, England. The club is affiliated to the Hampshire FA.

The club's name of Calleva comes from the nearby Roman Town of Calleva Atrebatum, based just outside Silchester. We currently compete in the Combined Counties League Premier Division South

Tadley has had a football team since the early 1900's. In the modern era the team was re-formed in 1989 and played in the Basingstoke and North Hants Leagues before winning promotion to the Hampshire League.

The club was formed as Tadley F.C in 1989. We joined the Hampshire League Division Three in 1994, finishing runners-up in 1995-96, gaining promotion to Division Two. The club changed its name to Tadley Town F.C. in 1999 and joined Division One upon reorganisation.

In 2004, we changed our name again to the present name and entered the Wessex Football League Division Three.

Division Three was renamed Division Two in 2006, and the club finished runners-up in 2007. In the 2007-08 season, we won the Wessex League Division One title but were denied promotion as the ground did not meet the requirements for the Premier Division.

The club achieved its ambition of gaining promotion to the Wessex League Premier Division in 2018-19 season - the highest level (Step 5) that the club has competed at. The goal was to consolidate its position on the field and to make significant progress with the infrastructure off the field. Tadley finished 8th in their first season.



PLAYER SPONSORSHIP

Sponsor highlighted on all Social Media posts featuring player.

Player full club tracksuit.

Professional photo with player

x1 vote in Fan's Player of the Season award.

£100

Contact Dan on
07788 515 668
for further information



GEORGE COFFIN

Good afternoon and a warm welcome to Barlow's Park to all of our supporters for this afternoon's Cherry Red Records Combined Counties Premier South fixture versus Epsom & Ewell. I'd also like to extend the welcome to the management team, club officials and supporters of The Salts who have made the trip to face us this afternoon, we hope you enjoy your time with us.

Touching briefly on our previous two fixtures, firstly we succumbed to a late draw away at Camberley Town. Throughout the game, I thought we gave a really good account of ourselves. In the first half, we capitalised on some mistakes from our opposition to go into the half as worthy leaders. The second half followed a similar pattern, with us still performing well, but conceding from a corner, and then a late penalty, saw the game turned on its head, and us going from having three points to one point with a kick of a ball. This was bitterly disappointing as I felt it was one of the best performances we had away at Camberley over the past couple of years, we just couldn't quite get ourselves over the line.

Last Saturday we then fell to a disappointing defeat on the road to Tooting & Mitcham. After a slow start, and conceding a goal, we managed to get back into the game with a very impressive finish from Alex Miller. But our lethargic performance continued throughout the half, going into half time 3-1 down and leaving a lot of work to do in the second half. In the second half we upped the intensity and threw everything we had at our counter parts, but just couldn't get the goal that would've propelled us further in the game and given us the confidence to go and attack the game further. There is no doubt that we will have to be better today to get a positive outcome in this fixture.

On today, we face a very good Epsom & Ewell side who are sat mid-table currently in the league, but will no doubt be in the play off places once games are caught up in the division. It is going to be a very tough game, but will be a challenge we will embrace, in an attempt to come out of this fixture with three points to push ourselves up the table.

Finally, I'd like to thank everyone who has come out today and so far this season to support the lads, they really do appreciate it.



TODAYS FIXTURES

Abbey Rangers vs Guildford City

Balham vs Eversley & California

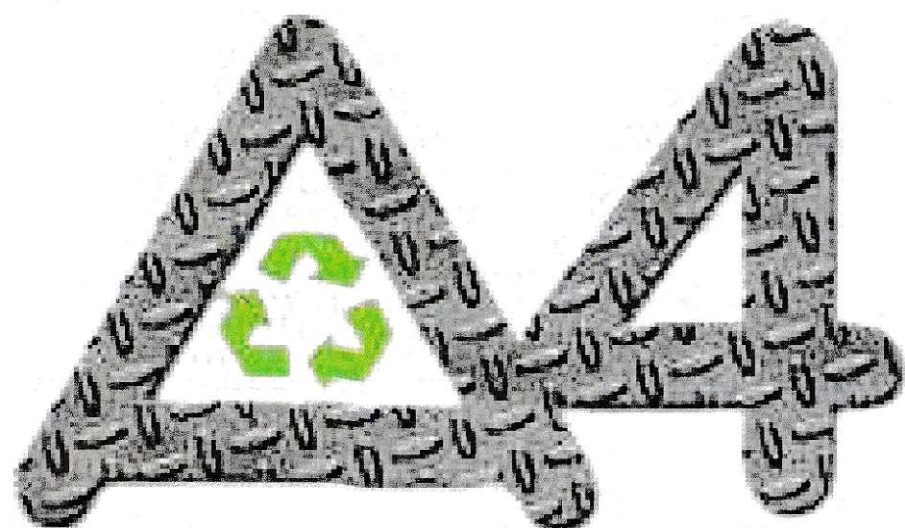
Camberley Town vs Fleet Town

Chipstead vs Cobham

Horley Town vs Sheerwater

Redhill vs Badshot Lea

Thatcham Town vs Tooting & Mitcham



metal recycling

WITH OVER 20 YEARS EXPERIENCE IN DEALING WITH
& RECYCLING ALL TYPES & QUANTITIES OF METAL

WWW.A4METAL.COM



**FLEXI
PLUMB**

Plumbing, Heating & Renewables

0330 1332 839

info@flexiplumb ltd.co.uk



EPSOM & EWELL
4TH OCTOBER | 3PM
HOME



COBHAM
11TH OCTOBER | 3PM
AWAY



GUILDFORD CITY
15TH OCTOBER | 7:30PM
AWAY



TOOTING & MITCHAM
18TH OCTOBER | 3PM
HOME



BALHAM
25TH OCTOBER | 3PM
HOME



CORINTHIAN-CASUALS
28TH OCTOBER | 7:45PM
HOME



FIRST TEAM FIXTURES OCTOBER 2025





Donnacha Burke



Andrew Charsley



Sol Ceesay



Joe Cummuskey



Adam Everiss



Kieron Farmer



Jordan Goater
The Carr Family



Brad Neal



Brad Passfield



Dan Williamson



Argjend Ahmetaj



Scott Costello



Jack French



Aime Kamdem



Alex Miller



Ash Neal



Emanuel Osei



Oliver Rowan



Lamin Sankoh



Connor Thorne



Sheldon Wright



Fiji Carter



Brett Denham

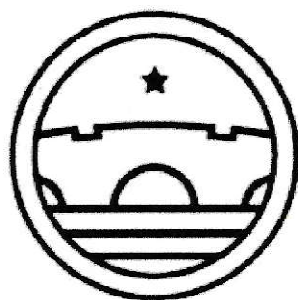


Kieran Rodgers
Neale Turk LLP
Solicitors



visit website for sponsorship opportunities

ESTD



1993

BWVH

DRINKS



Pos	Team	P	W	D	L	GD	PTS
1	Cobham	8	7	0	1	20	21
2	Abbey Rangers	9	6	1	2	-2	19
3	Fleet Town	11	5	3	3	9	18
4	Corinthian-Casuals	10	5	3	2	4	18
5	Badshot Lea	11	4	5	2	6	17
6	Sheerwater	9	5	1	3	3	16
7	Tooting & Mitcham United	9	4	3	2	0	15
8	Redhill	9	4	2	3	7	14
9	Sutton Common Rovers	9	4	2	3	1	14
10	Knaphill	9	4	1	4	1	13
11	Balham	9	3	4	2	1	13
12	Camberley Town	11	3	4	4	0	13
13	Epsom & Ewell	7	3	2	2	4	11
14	Chipstead	10	3	2	5	-8	11
15	Thatcham Town	9	3	1	5	-8	10
16	Horley Town	10	3	0	7	-3	9
17	Alton	8	2	3	3	-3	9
18	Tadley Calleva	7	1	3	3	-4	6
19	Eversley & California	10	1	3	6	-9	6
20	Guildford City	11	1	1	9	-19	4

PITCHSIDE ADVERTISING

Pitchside advertising is a smart & inexpensive way to gain exposure at all times within Barlows Park.

With a minimum of two teams every week playing on the pitch it is the perfect way for your company to gain exposure to all players, coaching staff, volunteers & supporters.

With your company branding one one of many advertising boards around the perimeter of the pitch you can be sure to feature in a host of match day photographs, club promotions & social media imagery.

Be part of the matchday experience at Barlows Park

PRICING

PITCHSIDE BOARD

£250

BOARD SPACE (PER SEASON)

£350





Founded in March 1918 as Epsom Juniors Cricket Club, football soon followed with Epsom Juniors F.C. playing from Alexandra Recreation Ground. Competitive action began in the Surrey Junior League in 1919, and the club became founder members of the Sutton & District League in 1920. Renamed Epsom Town in 1922, success came quickly with multiple trophies and entry into senior football. By 1925, the club had moved to West Street, winning the Surrey Senior League and soon the London League title.

The 1930s brought further success, highlighted by reaching the FA Cup First Round Proper in 1933/34 against Clapton Orient. After World War II, the club re-formed as Epsom F.C., later becoming Epsom & Ewell F.C. in 1960 to represent the wider borough. The 1970s saw resurgence, with Surrey Senior League doubles and a famous appearance in the inaugural FA Vase Final at Wembley in 1975. Entry into the Isthmian League followed, capped by Surrey Senior Cup glory in 1981.

The following decades brought mixed fortunes, relegations, and a long ground-sharing era after leaving West Street in 1993. Despite challenges, the club enjoyed cup runs and occasional league highs, including silverware in 2013 and promotion back to Step 5 in 2023 after a dramatic playoff win. Recent years have been turbulent, with frequent managerial changes and multiple ground moves.

Yet resilience remains, with the team lifting the Southern Combination Challenge Cup in 2025. Now based at Chessington & Hook United, the club continues its search for a permanent home back in the Borough.

Rob Mellor Photography



CHERRY RED RECORDS

NEW ALBUMS /
DEFINITIVE ANTHOLOGIES /
CLASSIC REISSUES /

Unique in depth interviews @ www.cherryred.tv

THE WONDERFUL WORLD OF CHERRY RED



www.cherryred.co.uk

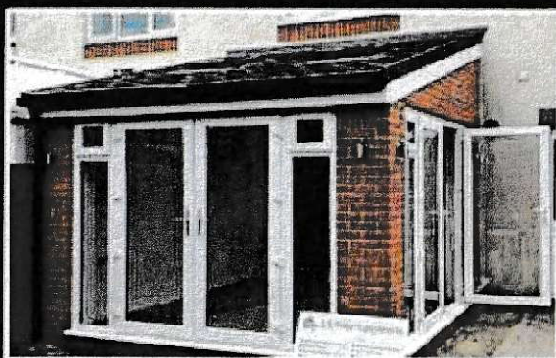
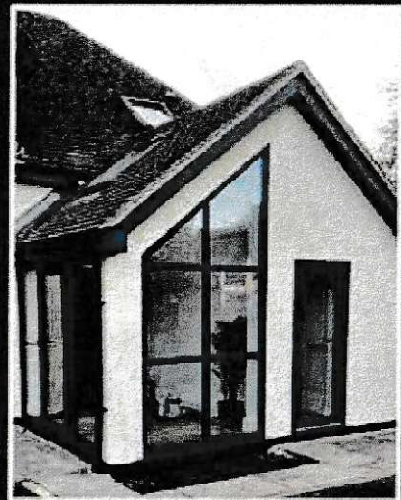
For details on all of our releases and how to order call our mailorder hotline 020 8996 3120
or visit the website





SR Home Improvements

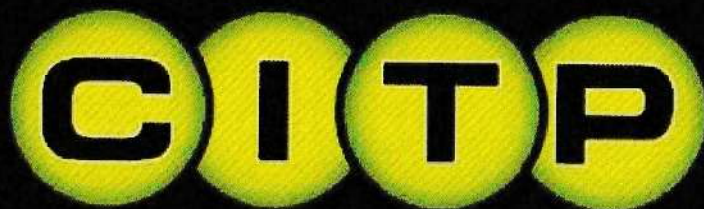
- Windows & Doors
- Conservatories
- Warm Roofs



Phone: 07793 548558

www.srhomeimprovements.co.uk





CONSTRUCTION INDUSTRY
— TRAINING PROVIDERS —

THE SAFE CHOICE

IN CONSTRUCTION INDUSTRY TRAINING

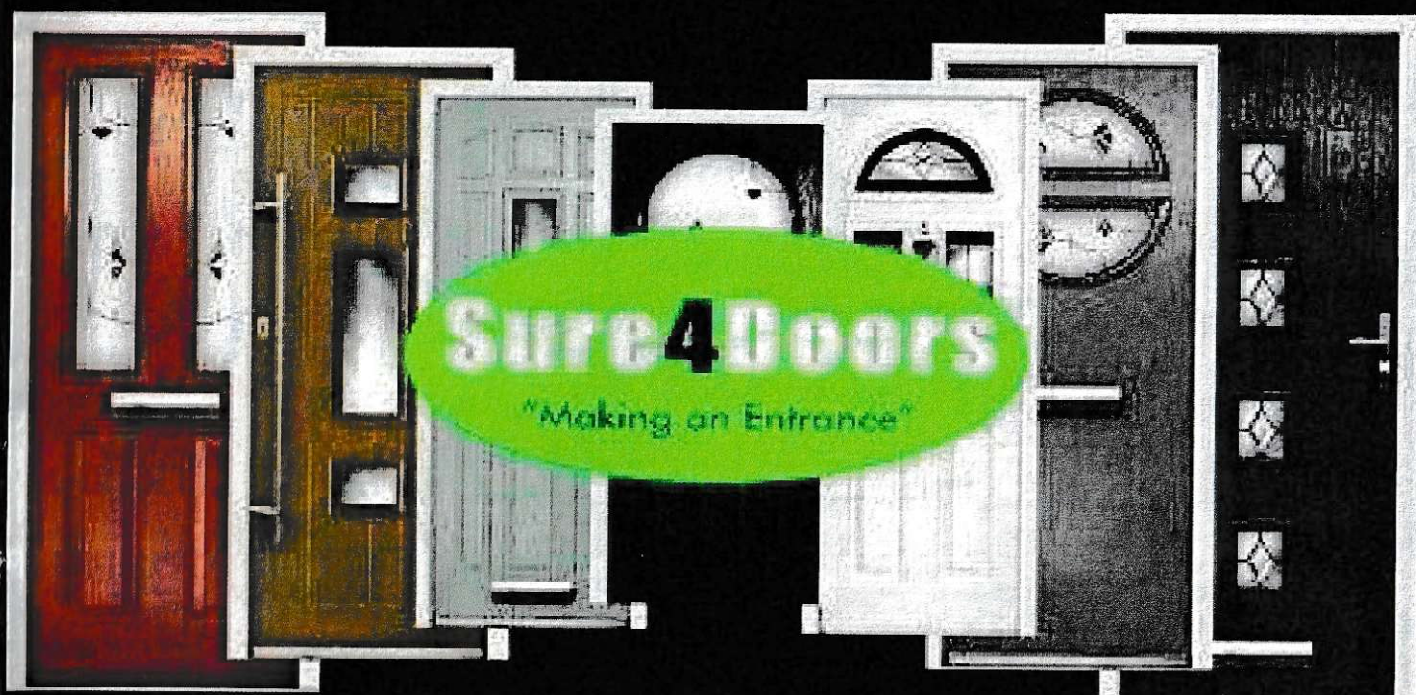
- ✓ Purpose built training facilities
- ✓ Nationally accredited and recognised
- ✓ Over 35 years combined experience
- ✓ Health & safety training
- ✓ Help with CITB Grants & Skills Funding
- ✓ Plant & construction training
- ✓ CSCS touch screen test centre
- ✓ CITB Approved Training Organisation
- ✓ Local and national courses offered

01189 700200

info@constructiontrainingproviders.co.uk
www.constructiontrainingproviders.co.uk

Sure4Doors

"Making an Entrance"



"Installing Doors – Securing your home"

Finli

Finli

Why is it so important to seek professional financial advice?

There is so much speculation
and conjecture online and
in the press.

**Mark Dolby,
Financial Planner**





**THANK YOU FOR
VISITING US
AT BARLOWS PARK**



TADLEY-CALLEVA vs EPSOM & EWELL

Joe **LAWLER**  Darryl **EVANS**

	start	sub		start	sub
Argjend Ahmetaj	●	●	Liam Avery	●	●
Donnacha Burke	●	●	Samuel Bartlett	●	●
FiFi Carter	●	●	Ollie Burke	●	●
Sol Ceesay	●	●	Hadif Darwys	●	●
Andrew Charsley	●	●	Reyon Dillon	●	●
Scott Costello	●	●	Thomas Drinkwater	●	●
Joe Cummuskey	●	●	Joe Dyett	●	●
Bret Denham	●	●	Eoin Fraser	●	●
Adam Everiss	●	●	Samuel Gray	●	●
Kieron Farmer	●	●	Lewis Hillary	●	●
Jack French	●	●	Louis Knight	●	●
Jordan Goater	●	●	Bradley Manning	●	●
Aime Kamdem	●	●	George Maxwell	●	●
Alex Miller	●	●	Andrew Matthews	●	●
Brad Neal	●	●	Seanan McKillop	●	●
Ash Neal	●	●	Charlie Postance	●	●
Brad Passfield	●	●	George Sellick	●	●
Kieran Rodgers	●	●	Sean Swift	●	●
Olly Rowan	●	●	Tommy Taylor	●	●
Lamin Sankoh	●	●	Finley Warren	●	●
Connor Thorne	●	●	Theo White	●	●
Dan Williamson	●	●			
Sheldon Wright	●	●			

REFEREE TEAM Shelby **Elson**, Charlie **Chalmers**, Richard **Lines**

PLEASE NOTE that it is an offence to enter the field of play at anytime, anyone doing so is liable to be ejected and may have further action taken against them. This includes at the end of the game where the players safety is of paramount importance. Your help is appreciated.